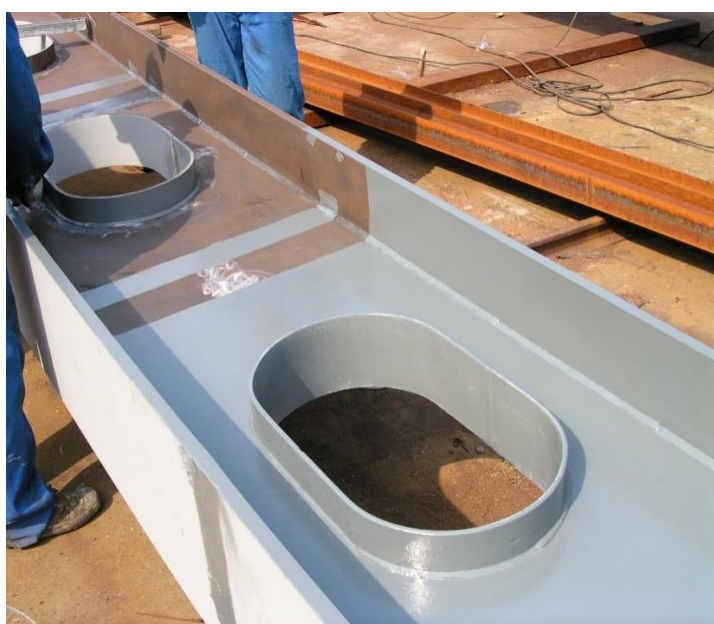


WUJIAOCHANG COLOR EGG - CHINA



Designed by Mr. Chen Yi-fei, one of the art masters in the world, **Wujiachang Color Egg** is considered the landmark of the new Wujiachang Area.

Assembled by all aluminum plates, it creates a huge and magnificent egg above the viaduct since June 2007, which is unique both in China and abroad.

Today, to appreciate the Color Egg when passing by the Middle Ring is the common awareness for all Shanghaineses.

When the night arrives, over 1,500 colour lamps, all computer-controlled, surround it and light up the darkness, making it one of the iconics in new Shanghai.

The 'egg' shows motion pictures on holidays or special events as a trial.

ZINGA was used on the steel supporting roof structures (see picture left) .



System:

ZINGA	1 x 50 µm DFT
Epoxy MIO	1 x 100 µm DFT
PU	1 x 60 µm DFT