

CULVERTS – AUSTRALIA

Under-road galvanised steel culverts are used throughout Australia. Road culverts are designed to allow the flow of water under roads and highways. In most case these culverts have provided excellent service but many exhibit corrosion after a while. **ZINGA** is used for maintenance, to prevent further deterioration of the galvanised substrate, thus removing the cost to either rebuild or re-sleeve the culvert.

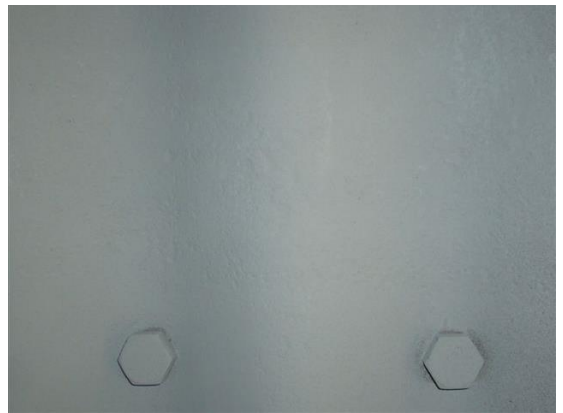


The below pictures reveal the general conditions of the culverts. This is quite common in most states of Australia. As bad as the corrosion looks, in most cases it did not penetrate through the existing galvanized steelwork.



Surface preparation: the surface is simply high pressure water washed to a minimum of 3000 psi at the nozzle head. Chlor*Rid was added at a mixed ratio of 1 part Chlor*Rid to 100 parts fresh potable water.

In 2008, two coats of **ZINGA** were applied by brush or spray application at 60 µm DFT (105 µm WFT) per coat, having a total dry film thickness of 120 µm. This will result in 30 years extended life of the under-road culverts. Areas with greater than 5% well dispersed pin-point rust were fully blasted to Sa 2½.



All edges, bolts and nuts have been stripe coated with **ZINGA** before the application of the full coating system to ensure a perfect seal and total protection.



System:

Surface preparation:

High pressure water

(or locally Blasting to SA 2 ½)

ZINGA

2 x 60 µm DFT